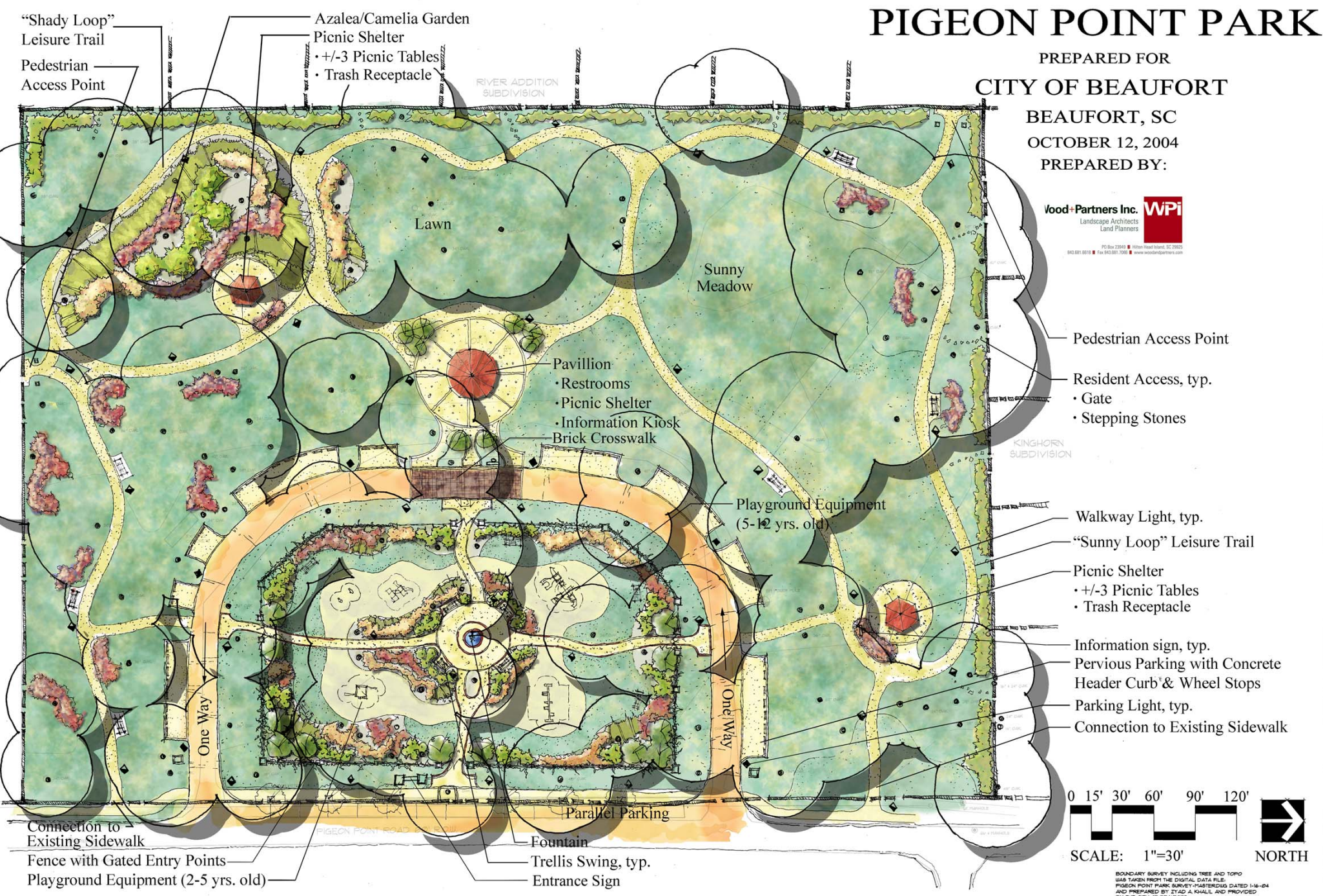


CONCEPTUAL MASTER PLAN PIGEON POINT PARK

PREPARED FOR
CITY OF BEAUFORT

BEAUFORT, SC
OCTOBER 12, 2004
PREPARED BY:



“Shady Loop”
Leisure Trail
Pedestrian
Access Point

Azalea/Camelia Garden
Picnic Shelter
• +/-3 Picnic Tables
• Trash Receptacle

RIVER ADDITION
SUBDIVISION

Lawn

Sunny
Meadow

Pavillion
• Restrooms
• Picnic Shelter
• Information Kiosk
Brick Crosswalk

Playground Equipment
(5-12 yrs. old)

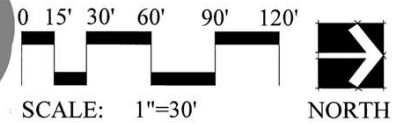
Pedestrian Access Point
Resident Access, typ.
• Gate
• Stepping Stones

KINGHORN
SUBDIVISION

Walkway Light, typ.
“Sunny Loop” Leisure Trail
Picnic Shelter
• +/-3 Picnic Tables
• Trash Receptacle
Information sign, typ.
Pervious Parking with Concrete
Header Curb & Wheel Stops
Parking Light, typ.
Connection to Existing Sidewalk

Connection to
Existing Sidewalk
Fence with Gated Entry Points
Playground Equipment (2-5 yrs. old)

Parallel Parking
Fountain
Trellis Swing, typ.
Entrance Sign



BOUNDARY SURVEY INCLUDING TREE AND TOPO
DATA TAKEN FROM THE DIGITAL DATA FILE
PIGEON POINT PARK SURVEY MASTERFILE DATED 1-16-04
AND PREPARED BY ZYAD A. KHALIL AND PROVIDED
BY THE CITY OF BEAUFORT.